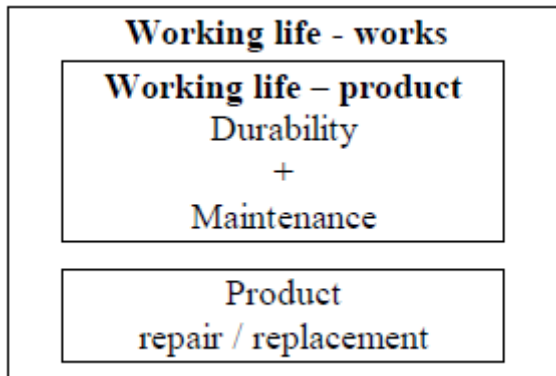


## **A 1 Definition of Durability and general product description**

### **Index of Texts, Tables and figures**

Source – N° of table	Description	page
01 – 01	working life guidance paper F	27
01 – 02	working life works and working life product	27
02 – 01	expected working life of thermal insulation	28
04 – 01	Examples of working life of thermal insulation products	29
42 - 01	Overview of thermal insulation products based on raw material	30



01-01 Working life guidance paper F

*Working life (works)* - the period of time during which the performance of the works will be maintained at a level compatible with the fulfilment of the Essential Requirements.

*Working life (product)* - the period of time during which the performance of a product will be maintained at a level that enables a properly designed and executed works to fulfil the Essential Requirements (i.e. the essential characteristics of a product meet or exceed minimum acceptable values, without incurring major costs for repair or replacement). The working life of a product depends upon its inherent durability and normal maintenance.

A clear distinction has to be made between the assumed economically reasonable working life for a product (also called: *design working life*), which underlies the assessment of durability in technical specifications, and the actual working life of a product in a works. The latter depends on many factors beyond the control of the producer, such as design, location of use (exposure), installation, use and maintenance. **The assumed working life can thus not be interpreted as being a guarantee given by the producer.**

01 – 02 working life works and working life product

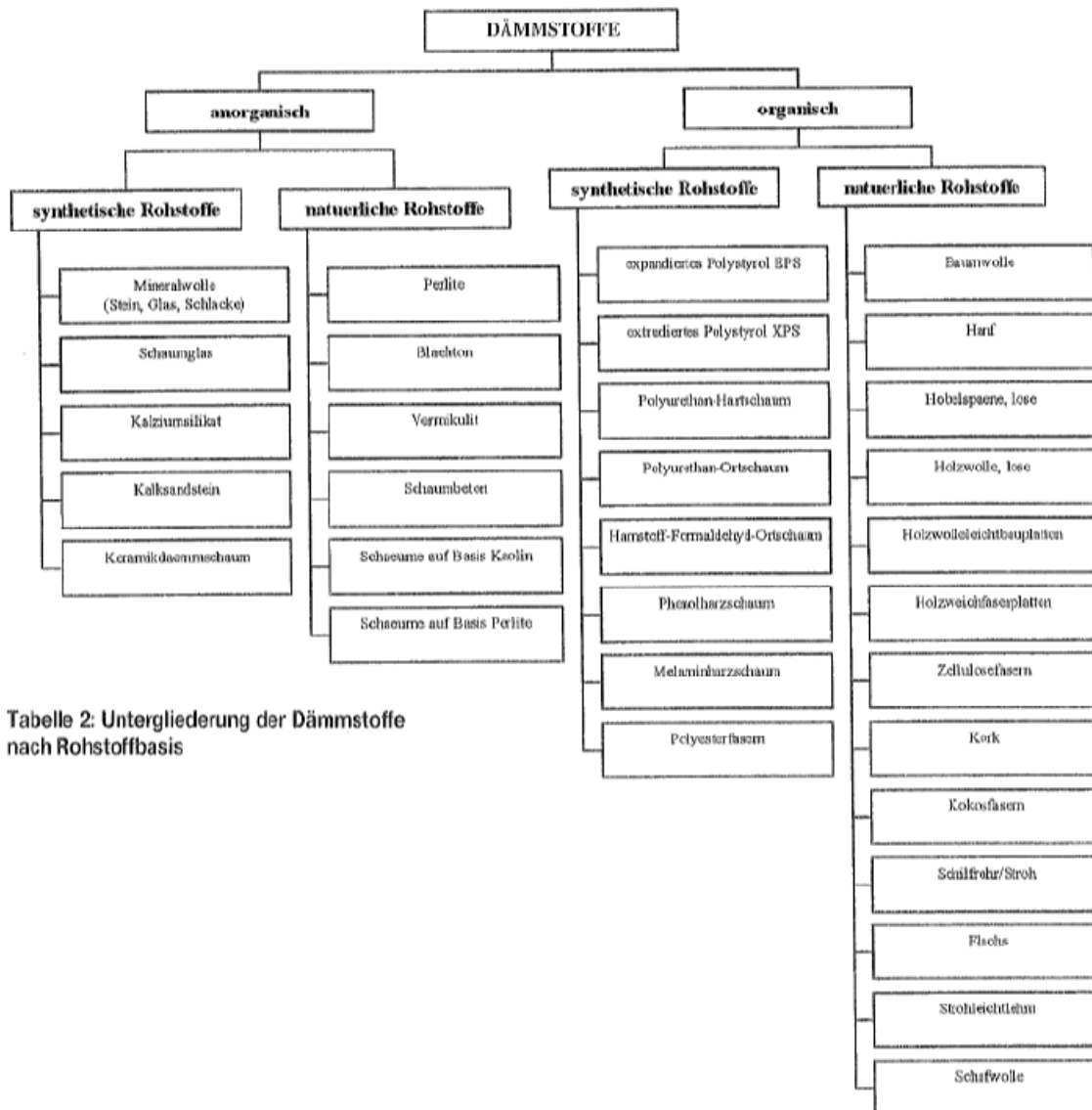
Bauteil / Bauteilschicht		Lebenserwartung von - bis [a]	mittlere Lebenserwartung [a]
	Weichholz	30 - 50	40
	PVC, Linoleum	15 - 25	20
	Textil	8 - 20	10
	Versiegelungen, Lack	8 - 10	8
	Imprägnierungen, Öl, Wachs	3 - 5	4
	28. Deckenbekleidungen, abgehängte Decken		
	Holz, Holzwerkstoff	60 - 80	70
	Gipskarton, Mineralfaserplatten, Kunststoff, Aluminium	30 - 60	45
	Unter- und Abhängekonstruktion - Metall	50 - 100	70
	- Holz	30 - 60	50
Nichttragende Konstruktion, Dächer	29. Flachdachabdichtungen ohne Schutzschichten	15 - 30	20
	mit Schutzschichten (beklebt, begrünt)	20 - 40	30
	30. Dachentwässerung, innenliegend		
	Innenabläufe aus Edelstahl, Kunststoff, Guss	25 - 50	40
	Innenliegende Rinnen, Zinkblech, Kunststoff	20 - 30	25
	31. Lichtkuppeln	20 - 30	25
	32. Dacheindeckungen geneigter Dächer		
	Zinkblech	25 - 40	35
	Faserzementwellplatten, kleinformatige Faserzementplatten	30 - 50	40
	Dachziegel, Betondachsteine	40 - 60	50
Schieferplatten	60 - 100	70	
Kupfer	40 - 100	50	
33. Dachentwässerung, außenliegend			
Kunststoff	15 - 30	20	
Zinkblech	20 - 30	25	
Kupferblech	40 - 100	50	
34. Wärmedämmung	25 - 35	30	

02 – 01 expected working life of thermal insulation

#### Auswahl von Dauerhaftigkeiten für Dämmungen in Bauteilen

Kostengruppe	Bauteil	Durchschnittswert (in Jahren)	durch Gütesicherung optimierter Wert (in Jahren)
<b>332</b>	<b>Nichttragende Außenwände</b>		
332.3	Dämmung		
332.3.1	Zellulosefasern	35	50
332.3.2	Mineralwolle	40	50
<b>335</b>	<b>Außenwandbekleidung, außen</b>		
335.5	Wärmedämmung, hinterlüftet		
335.5.1	Holzfasern	30	50
335.5.2	Kork, expandiert	50	60
335.5.3	Mineralwolle	40	50
335.6	Wärmedämmung, Verbundsystem		
335.6.1	Holzfasern	20	30
335.6.2	Kork, expandiert	40	40
335.6.3	Kalziumsilikatschaum	40	40
335.6.4	Mineralwolle	30	30
335.6.5	Polystyrol, expandiert (EPS)	30	30
<b>363</b>	<b>Dachbeläge</b>		
363.6	Dachdämmung, Warmdach		
363.6.1	Zellulosefasern	30	50
363.6.2	Mineralwolle	40	60
363.6.4	Polystyrol, expandiert (EPS)	40	50
363.7	Dachdämmung, Umkehrdach		
363.7.1	Schaumglas	80	80
363.7.2	Polystyrol, expandiert (EPS)	30	30

#### 04 - 01 Examples of working life of thermal insulation products



42 - 01 Overview of thermal insulation products based on raw material